



# Direct Resin Restorations for Esthetic in Patients with Tooth Discoloration

Eurok Shim<sup>a\*</sup>, Soram Oh<sup>a</sup>

<sup>a</sup>Kyung Hee University Dental Hospital, College of Dentistry, Kyung Hee University, Seoul, Korea

## Objectives

Direct resin veneer is a conservative method to correct existing abnormalities, esthetic deficiencies, or discolorations. It is relatively inexpensive, can be completed with a single visit, and can be repaired, making them a good alternative to porcelain veneers.

This case report presents improvement of anterior teeth leading to a "perfect" smile.

## Clinical case

Chief complaint: treatment for #22 crown incisal fracture

Age and Sex: 31/M

Medical and dental history: N/S

Present illness:

Per(-),Mo(-),discoloration(+) on #21(endodontic treated, 20years ago)

Per(-),Mo(-),Bite(-), incisal tip fracture on #12,21,22



Fig.1 Initial Clinical photo, Periapical radiographies

Diagnosis:

Discoloration on #21

Incisal Tip Fracture on #12, 21, 22

Treatment plan:

#12-22 Direct composite resin veneer

Clinical procedure

1. Diagnostic wax-up for #12-22
2. Old core removal, #11,21 resin build up
3. #12,22 resin build up

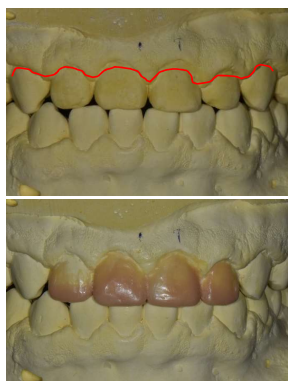


Fig.2 Study model and Diagnostic wax-up

Too wide!

	#12	#11	#21	#22		
Width	6.7	8.0	8.0	6.4	overjet	2
Height	6.2	7.1	7.0	5.4	overbite	-
W/H	1.08	1.14		1.18		

	#12	#11	#21	#22		
Width	6.7	8.1	8.1	6.4	overjet	2
Height	7.4	8.5	8.5	7.4	overbite	1.5
W/H	0.90	0.95		0.86		



Fig.4 1week after #21 non vital bleaching, #21 resin core



Fig.4 #11,21 resin veneer and #21 gingivectomy



Fig.5 #12,22 resin veneer and #22 gingivectomy



Fig.6 #21 cervical resin repair, distal & incisal polishing(after 1 month)

Recall Check- After 6month



Fig.7 Review after 6 months. Good condition of the restorations

## Results

The patient maintained a satisfactory esthetic anterior region after approximately 6 months and the previous discoloration was completely masked.

It is different from the average wide/height value of 75-80%, but has a value less than 1, and the overbite is close to the normal value, so it is more balanced than before.

## Conclusion

For successful anterior resin restoration, wax-up using a diagnostic model can be performed, and both dental and gingival esthetics act together to provide better harmony and balance. Direct composite resins can be used in anterior restorations for better esthetic.