

# Restoration of maxillary lateral incisor of peg-lateralis using direct composite resin veneer

Hwang-Jae Maeng\*, Kun-hwa Sung, Yoorina Choi, Su-Jung Park

Department of Conservative Dentistry, School of Dentistry, Wonkwang University, Iksan, Korea

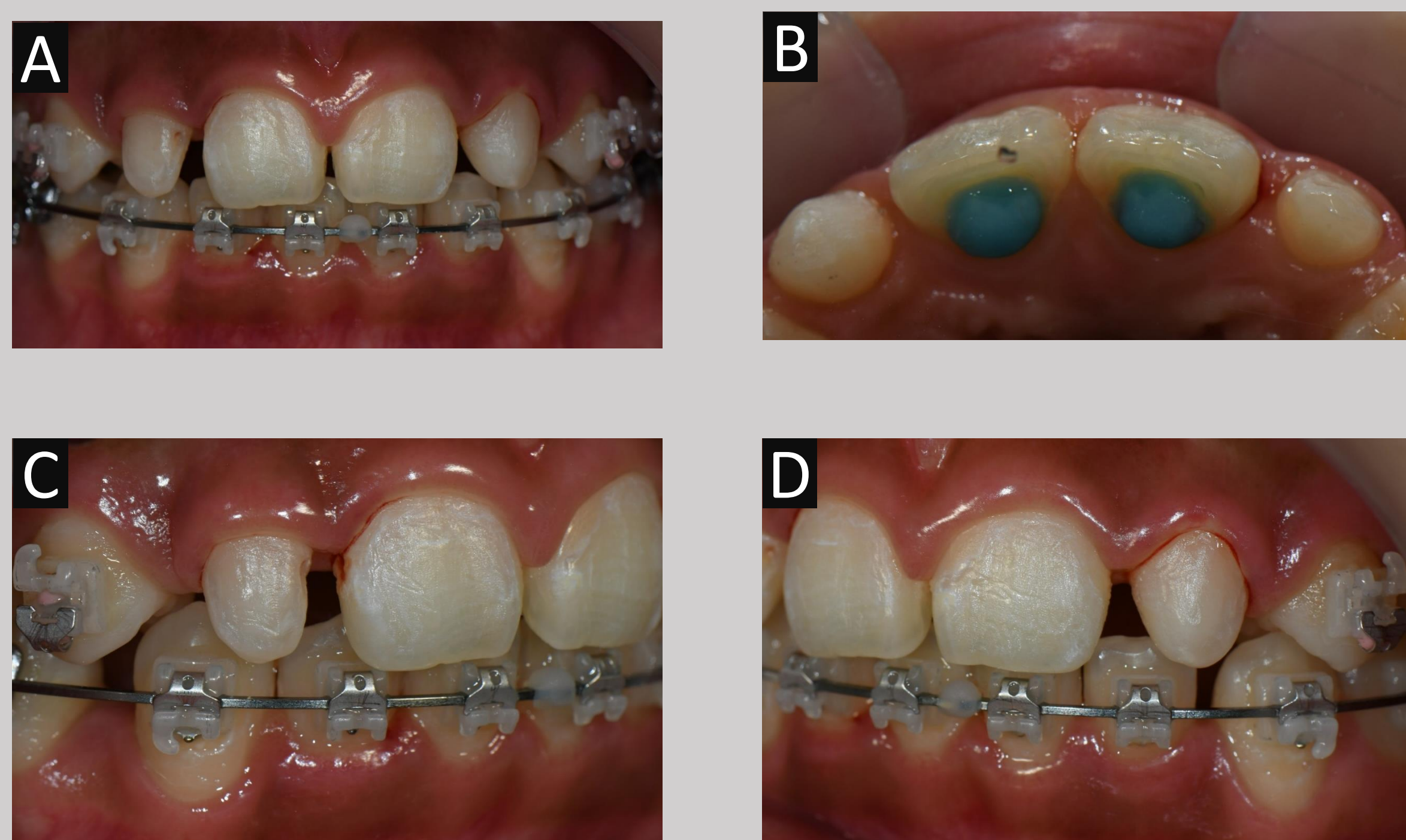
## I. Introduction

A peg-laterals of the maxillary lateral incisors can cause the loss of space in arch. This case report describes a peg-shaped lateral incisor treatment with direct composite resin veneer, which provide esthetic results, recover lost space and restore tooth shape and size.

## II. Material and Methods

### <Patient Information>

1. Sex/Age : F/13
2. Chief Complaint : Restoration of peg-lateralis of the maxillary lateral incisors referred from the orthodontics department
3. Past Medical History : No significant
4. Past Dental History : 2021.10.21 ~ Orthodontic treatment



**Figure 1.** The preoperative intraoral clinical photograph on the labial ( A, C, D) and incisor view (B)

### <Diagnosis>

Peg-shaped lateral incisor on #12, 22

### <Treatment Plan>

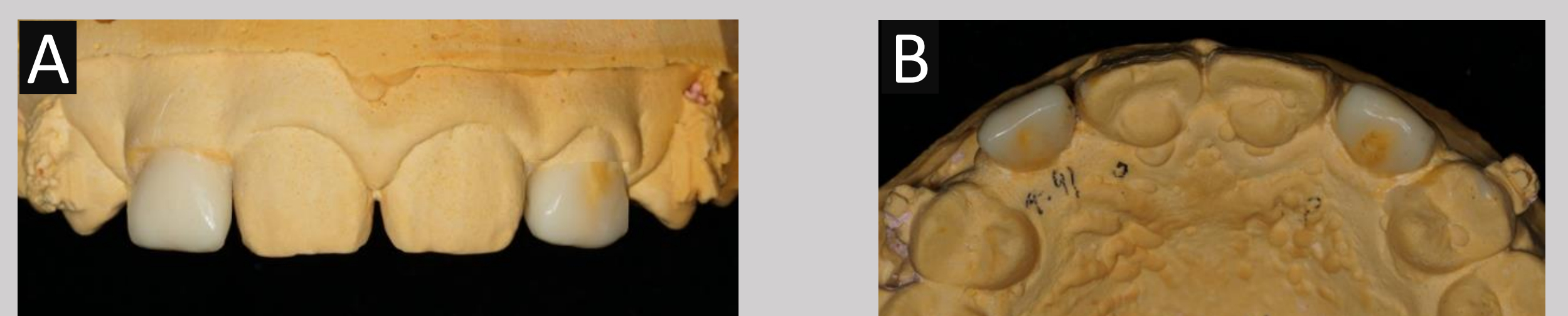
Direct Composite Resin Veneer

## III. Results

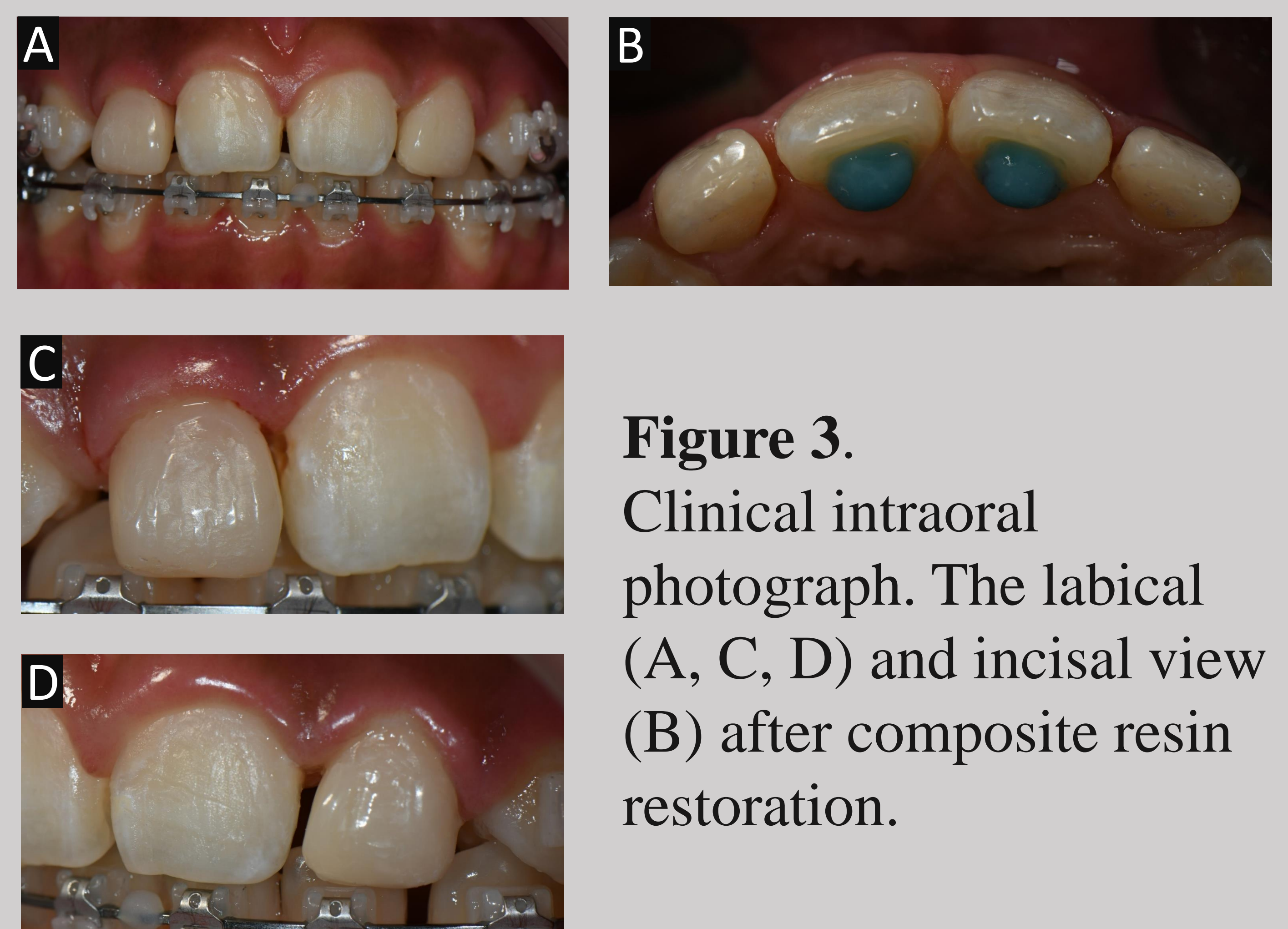
A peg-laterals of the maxillary lateral incisors can cause the loss of space in arch. This case report describes a peg-shaped lateral incisor treatment with direct composite resin veneer, which provide esthetic results, recover lost space and restore tooth shape and size. Performing resin veneers during orthodontic treatment, rather than after, can provide aesthetic enhancement throughout the long duration of orthodontic treatment and make it possible to create an ideal lateral incisor with sufficient space

## IV. Conclusion

The direct composite resin veneers are an effective restorative method of peg-laterals in growing patients.



**Figure 2.** Diagnostic wax-up. Labial (A) and incisal (B) view.



**Figure 3.** Clinical intraoral photograph. The labial (A, C, D) and incisal view (B) after composite resin restoration.



**Figure 4.** The intraoral clinical photograph on the labial (A), incisal view (B) at the 3 months follow up