

# Aesthetic restoration for unilateral conical shaped maxillary lateral incisor

Eunseon Jeong\*, Kun-hwa Sung, Yoorina Choi, Su-Jung Park

Department of Conservative Dentistry, School of Dentistry, Wonkwang University, Iksan, Korea

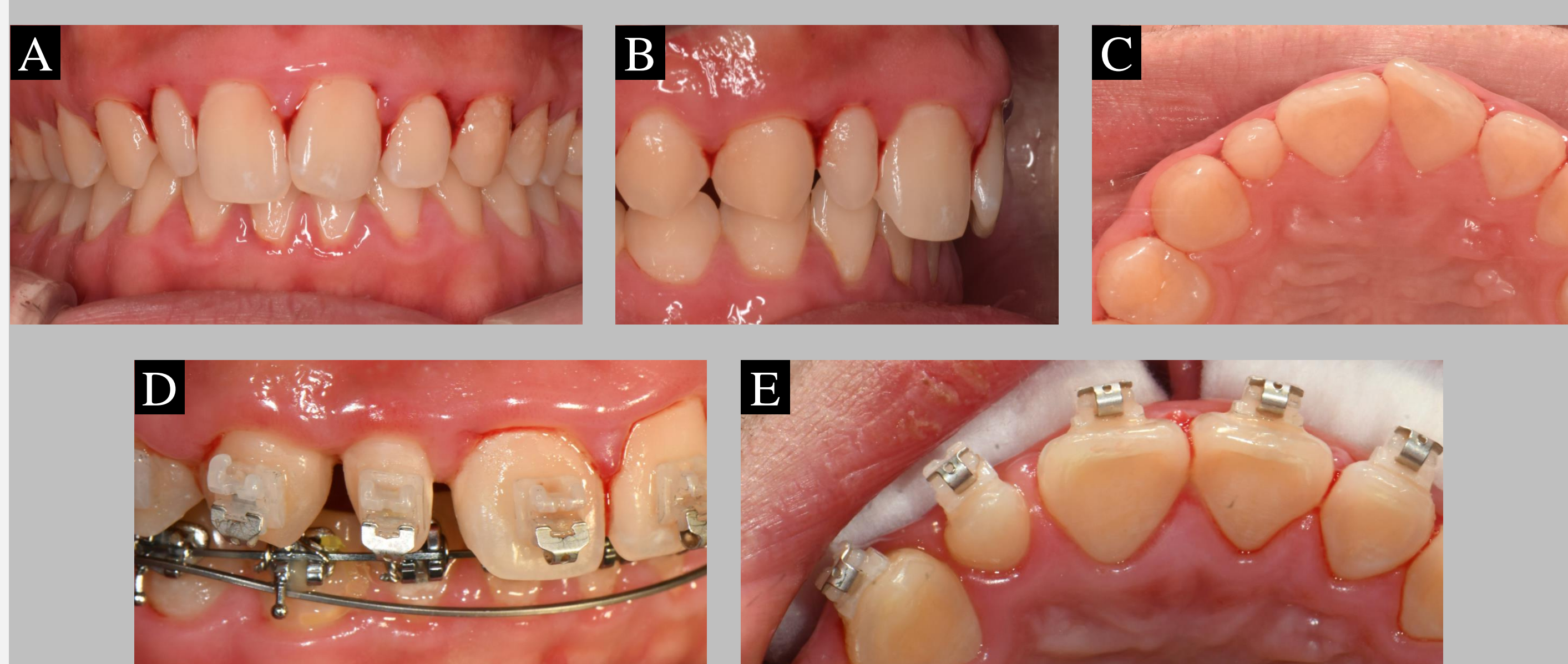
## I. Introduction

Conical tooth anomalies can cause aesthetic and orthodontic problems in individuals. This is a case of a peg-shaped lateral incisor restoration with direct composite resin veneer, which provides esthetic results by recovering the ideal tooth shape and size.

## II. Materials and Methods

### <Patient Information>

1. Sex/Age : M/19
2. Chief Complaint : My upper right lateral incisor is small.
3. Past Medical History : No significant
4. Past Dental History : 2022.01~ Orthodontic treatment



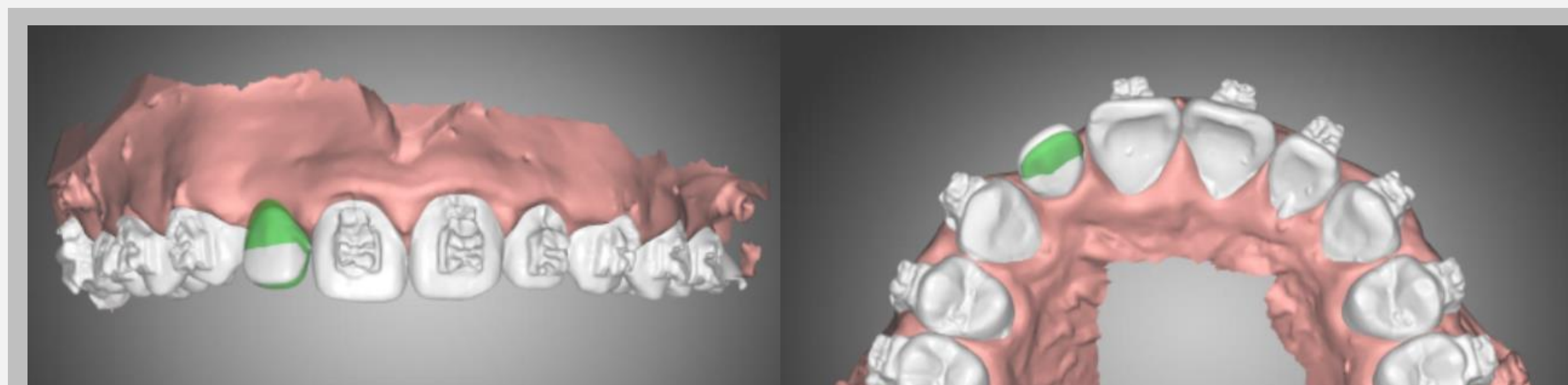
**Figure 1.** The preoperative intraoral clinical photograph on the labial (A, B) and incisal view (C) on first visit. Clinical photograph after starting orthodontic treatment on the labial(D) and incisal view (E).

### <Diagnosis>

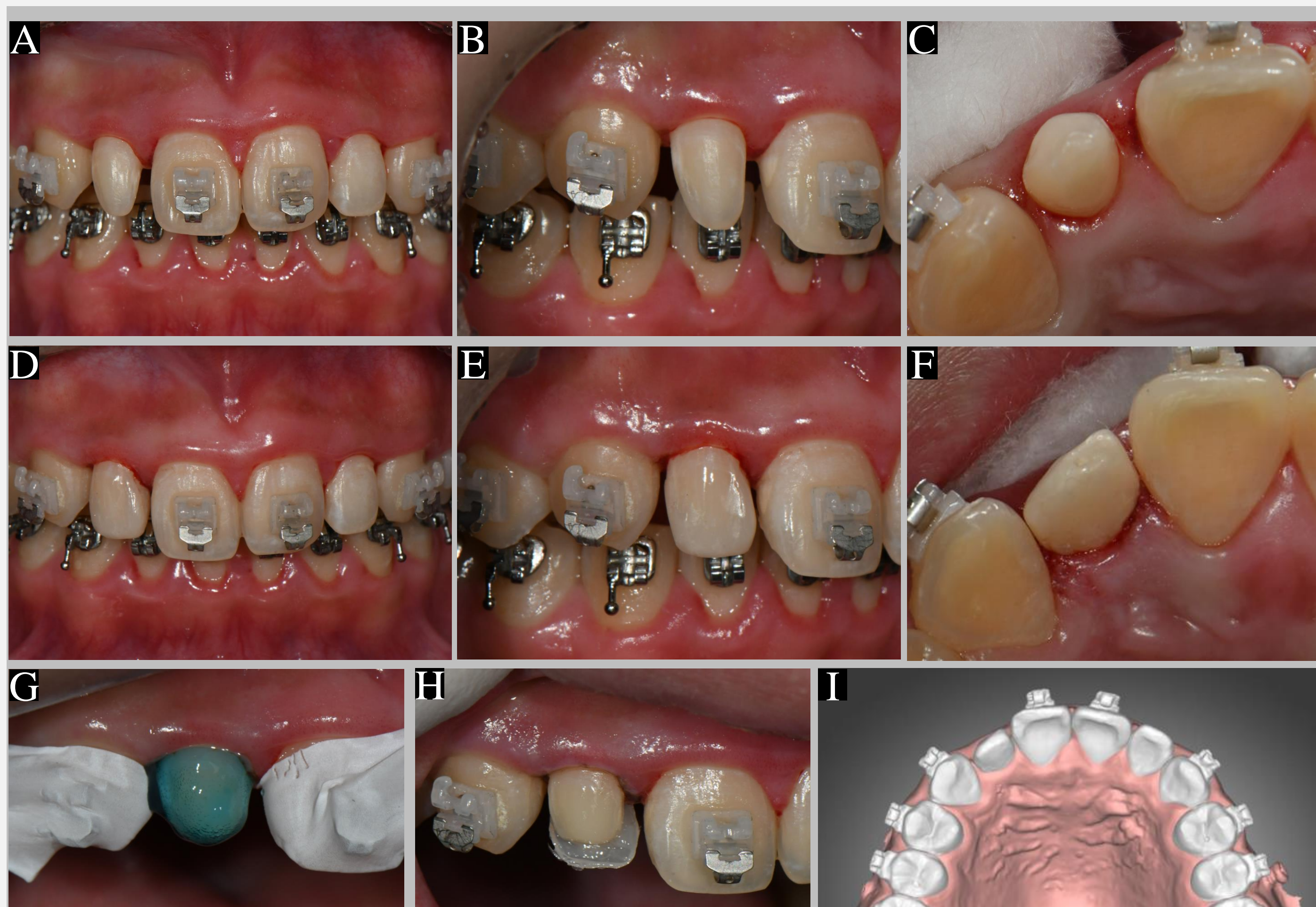
Peg-shaped lateral incisor on #12

### <Treatment Plan>

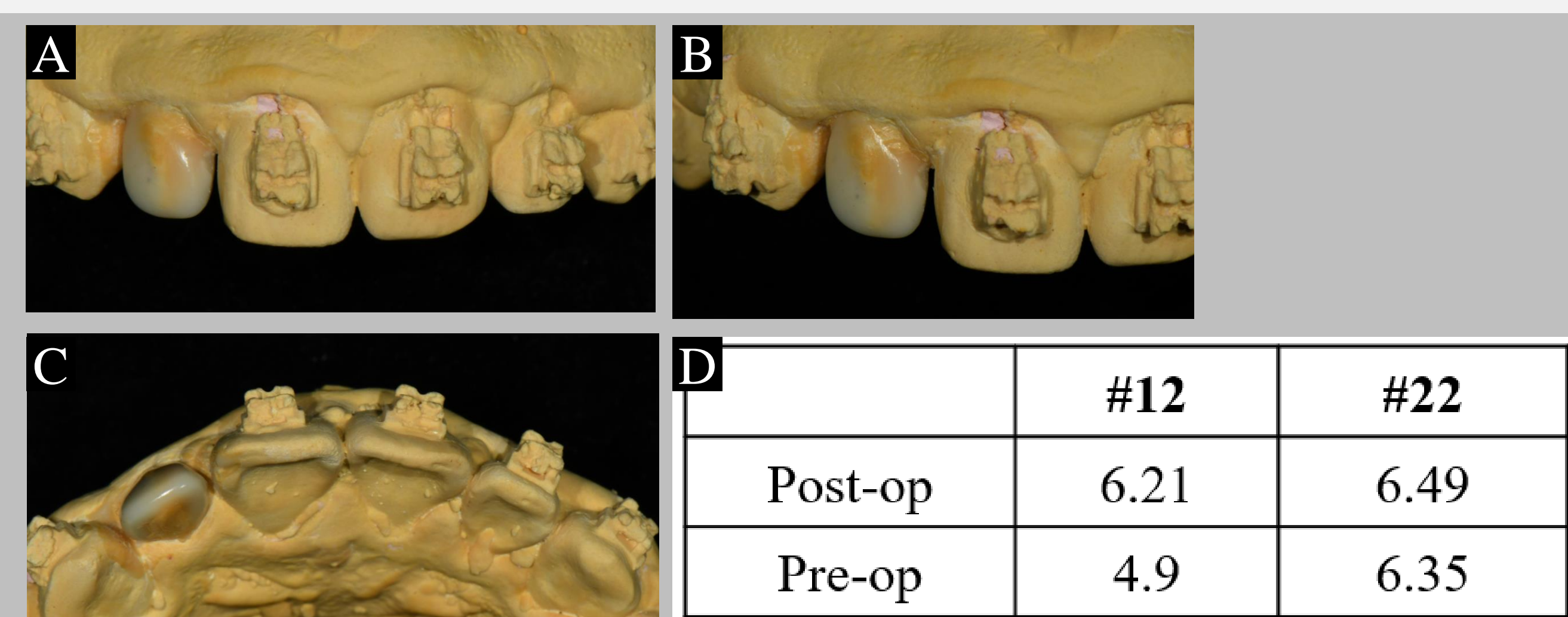
Direct composite resin veneer



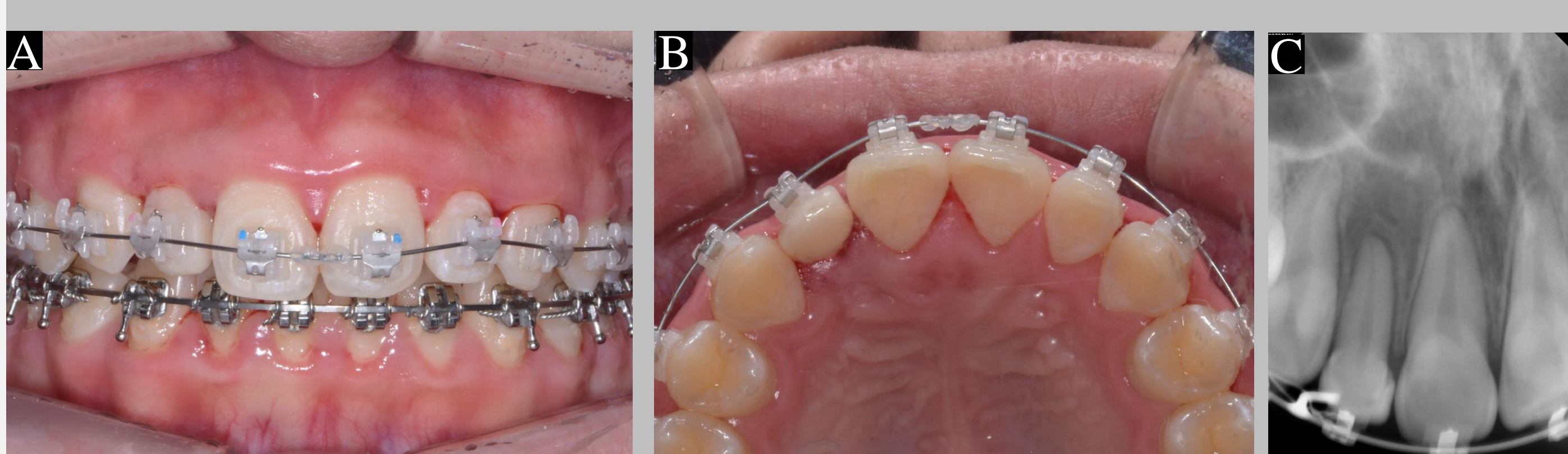
**Figure 3.** Intraoral scanned image of diagnostic wax-up model before axial change and after axial change(Green).



**Figure 4.** Clinical intraoral photograph. The labial (A, B) and incisal (C) view of tooth before composite restoration on #12. The labial (D, E) and incisal view(F) after composite resin restoration. Clinical procedure (G, H). Intraoral scanned image of tooth after restoration.(I)



**Figure 2.** Diagnostic wax-up. Labial (A, B) and incisal(C) view. Space analysis with study model(D)



**Figure 5.** The intraoral clinical photograph on the labial(A), palatal(B) view and radiograph (C) at the follow up.

## III. Results

At the 3-month follow up, the restoration was well maintained in accordance with the planned axial changes. No discomfort of the patient was found.

## IV. Conclusion

The direct techniques are minimally invasive, which can preserve the tooth structure. Also, Patient's esthetic expectations can be satisfied with the direct composite restorations.